

Wanat Park Design

Public-Student Partnership in the Design Process

UConn Landscape Architecture Students

Fall 2019

Project Background

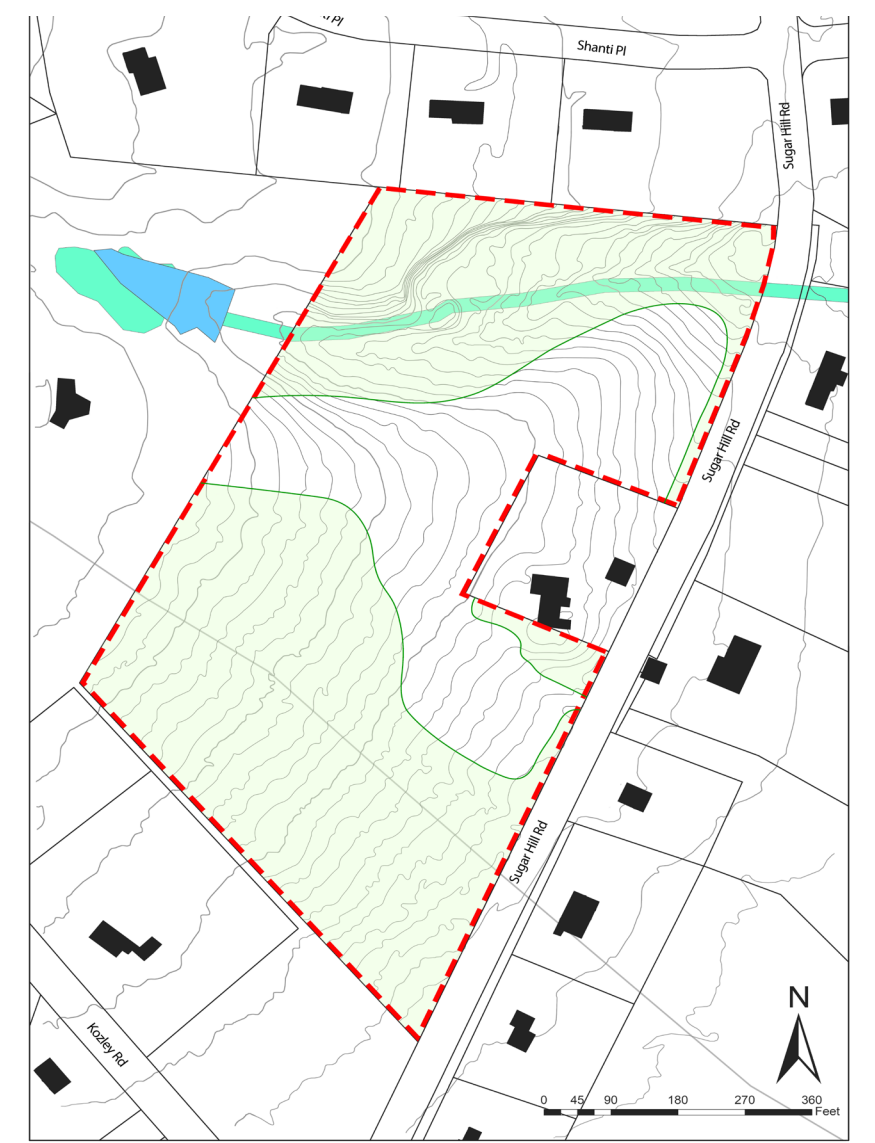
As a community service learning project, the students were tasked to conduct a park design for the property donated by the Wanat family to Town of Tolland. The donation entailed that the property is used for open space and benefits Tolland seniors. The Conservation Commission in Tolland has been partnered with the UConn Landscape Architecture Program to support the project by providing relevant data and information, giving a guided site tour, and coordinating design charrette with senior center members and town residents. Stakeholder engagement was a key component in design process. Students were asked to obtain needs and desire of potential site users of the project site through various methods including community and senior center visits, informal interviews, and design charrette, and to synthesize them as a critical approach to inform design decisions.

Project Site

Project site is a 13.4-acre property on Sugar Hill Road in Tolland, CT. It is open grass/woodland surrounded by small residential development, a conservation easement parcel to the northwest and the Charter Brook crossing the northern part of the site.

Design Imperatives

The project was grounded upon the guiding principles of design with nature, ecological services, sustainability, resilience, and universal design, to promote the health of both site ecosystem and site users. Design parameters of particular interest include walking paths, landscape improvement, habitats for birds and pollinators, passive recreation and nature education, shade and seating and a small parking area.



Site Visit



Site tour guided by Richard Merritt and Eugene Koss from the Town of Tolland Conservation Commission on October 7, 2019.

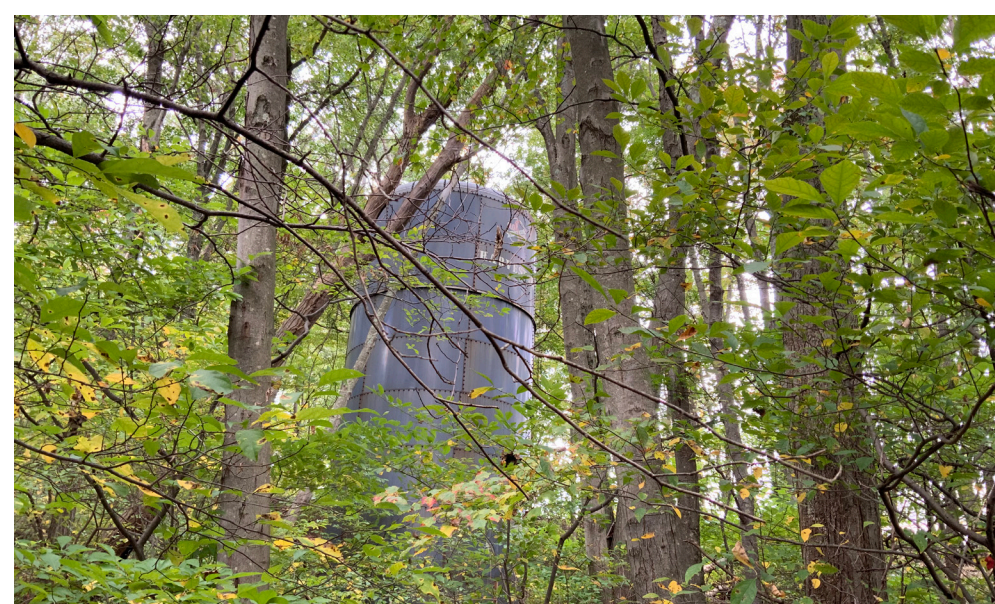
Site Features



Woodlands taking up about two-thirds of the Wanat land



Open meadows taking up about one-third of the Wanat land.



A large, abandoned water silo hidden in the woods on the northeast side of the property



Senior Center Visit



A quick tour of the Tolland Senior Center guided by Fran Weigand, Senior Center Director following the site visit on October 7, 2019.



Discussion about design charrette logistics with senior center administrators and Heidi Samokar, Director of Planning and Development in Town of Tolland.



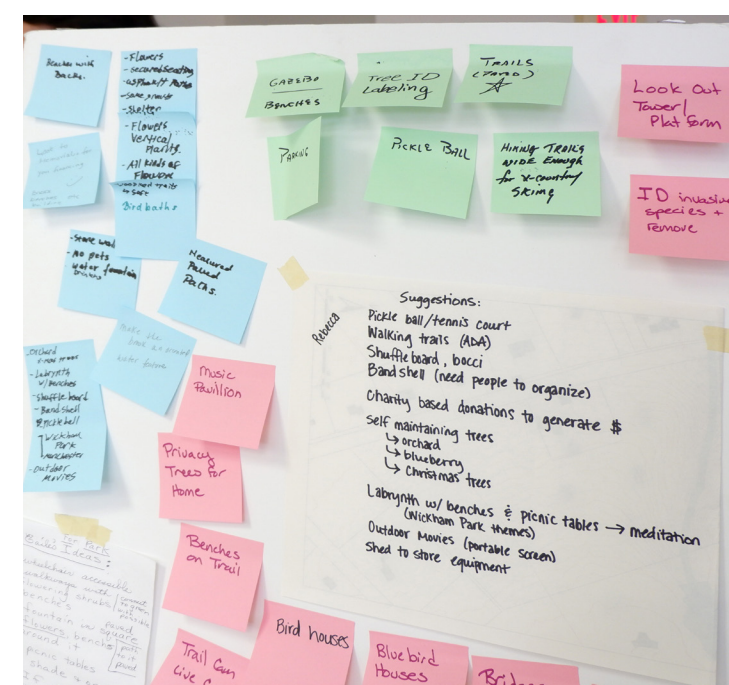
Social gathering and recreational activities of senior community members at Tolland Senior Center.



Students introducing themselves and Wanat park project to the senior community members.

Design Charrette

To engage with residents in the community, a student-led design charrette was held on October 18, 2019. More than 50 people attended the public event brainstorming their ideas about the proposed park and participating in the design process.



Group photo of design charrette participants



↑ Dr. Park and student host Anthony Madore introducing the project and site context to audience.

Help Tolland Plan a Park for Seniors!

Friday, October 18, 2019
Noon to 3 p.m.
Friday, October 18, 2019
674 Tolland Stage Road (Senior Center)

Snacks will be provided.

The Tolland Conservation Commission has teamed with the UConn School of Landscape Architecture to generate ideas for a park for seniors. The Town owns a 13.4-acre property on Sugar Hill Road that was donated by the Wanat family a number of years ago. The donation entailed that the property is used for open space and benefits Tolland seniors.

Join us for a hands-on session where attendees will work with the UConn students to generate ideas for this property. All ages are welcome.

Based on the results, the Town will explore viable options for this important property.

If you can't attend but have ideas, please email conservation@tolland.org or call 860-875-3055.